

10.35 Acres  
FM 2657 - Briggs

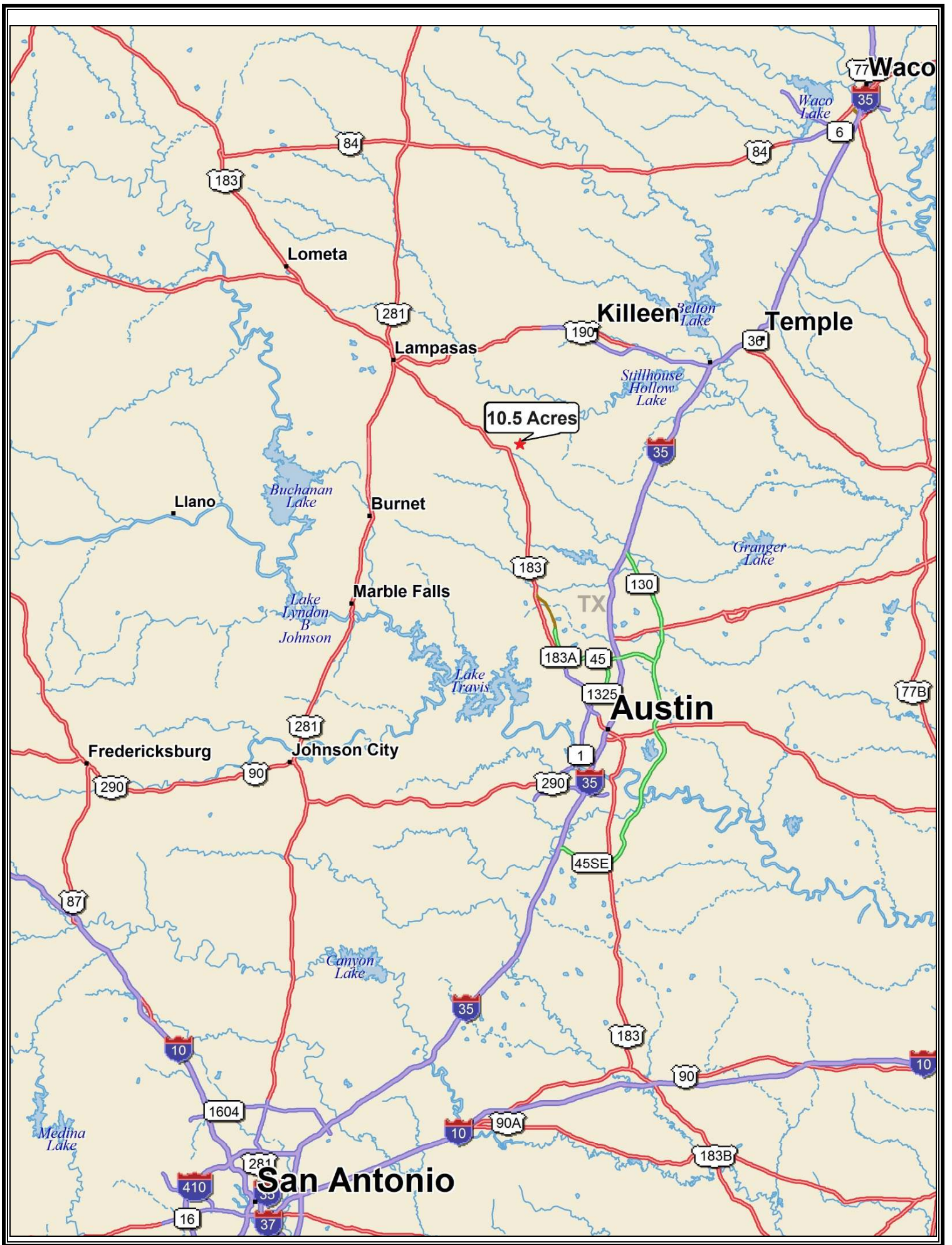


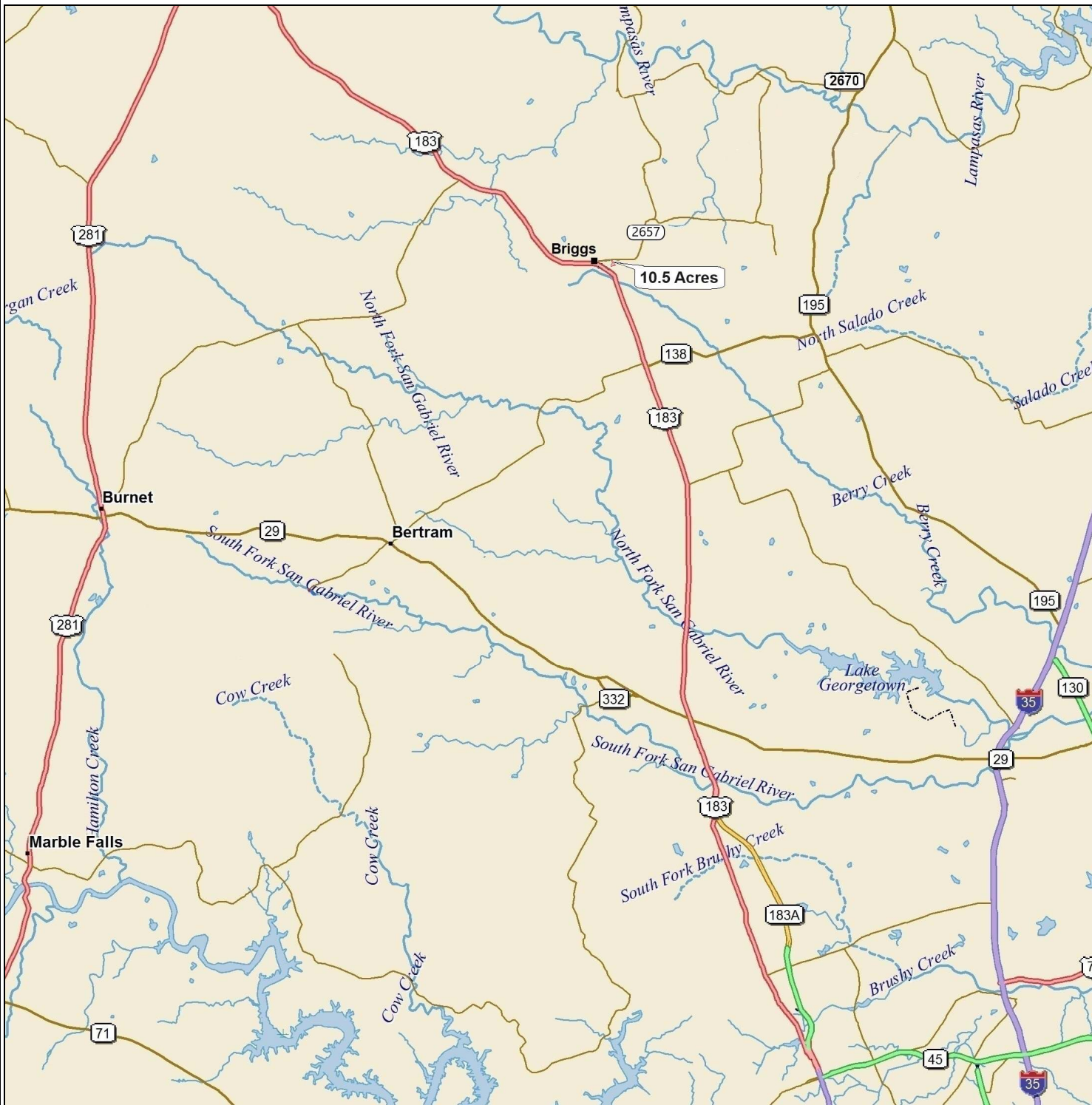
10.5+/- acres that provides a private, beautiful homesite with lots of mature hardwood trees. Direct access to FM 2657 with no HOA and no restrictions. Located along the Hwy. 183 corridor 15 minutes to Liberty Hill, 25 minutes to Leander / Cedar Park or 45 minutes to downtown Austin.

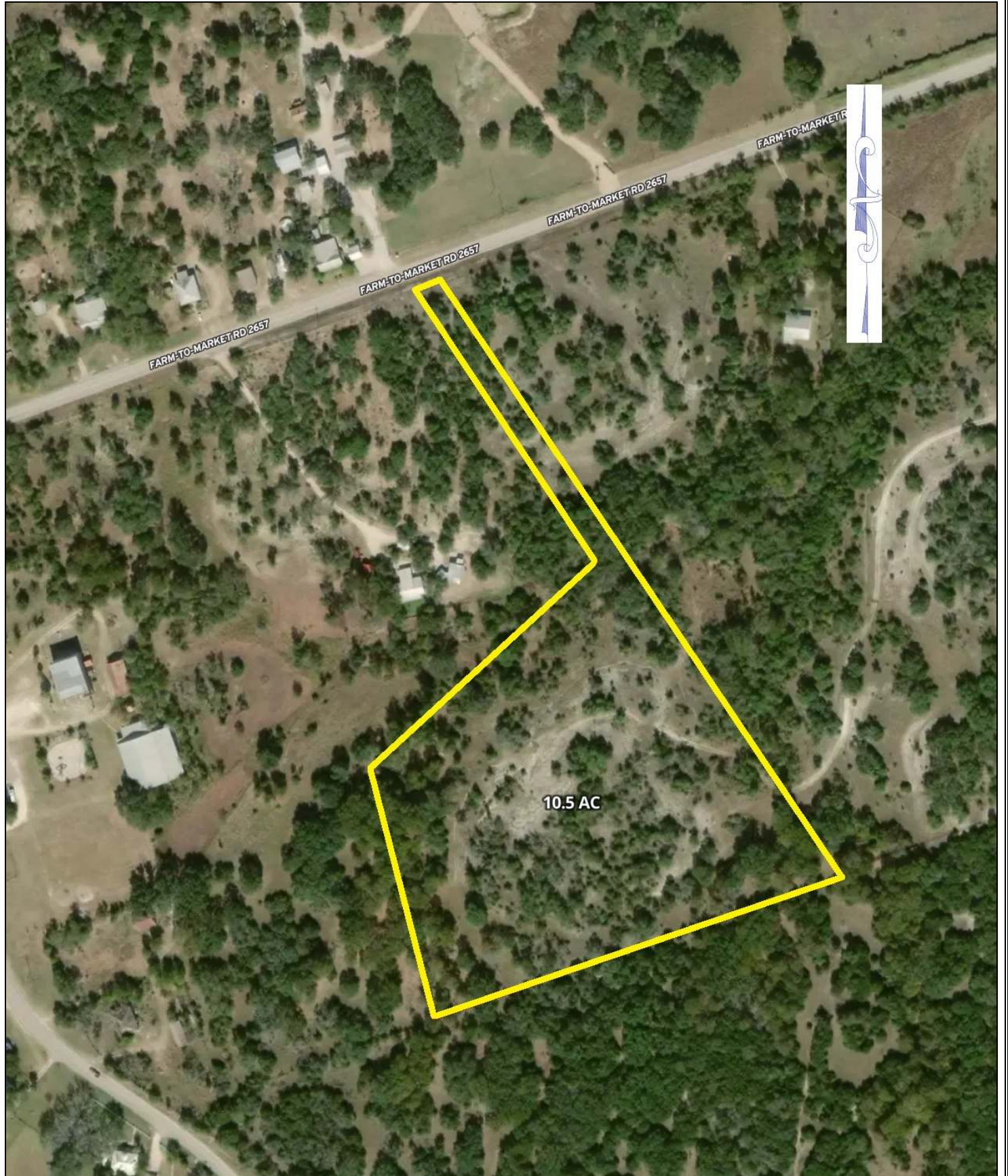
**\$285,000**



This information is deemed reliable but is not guaranteed. cc.







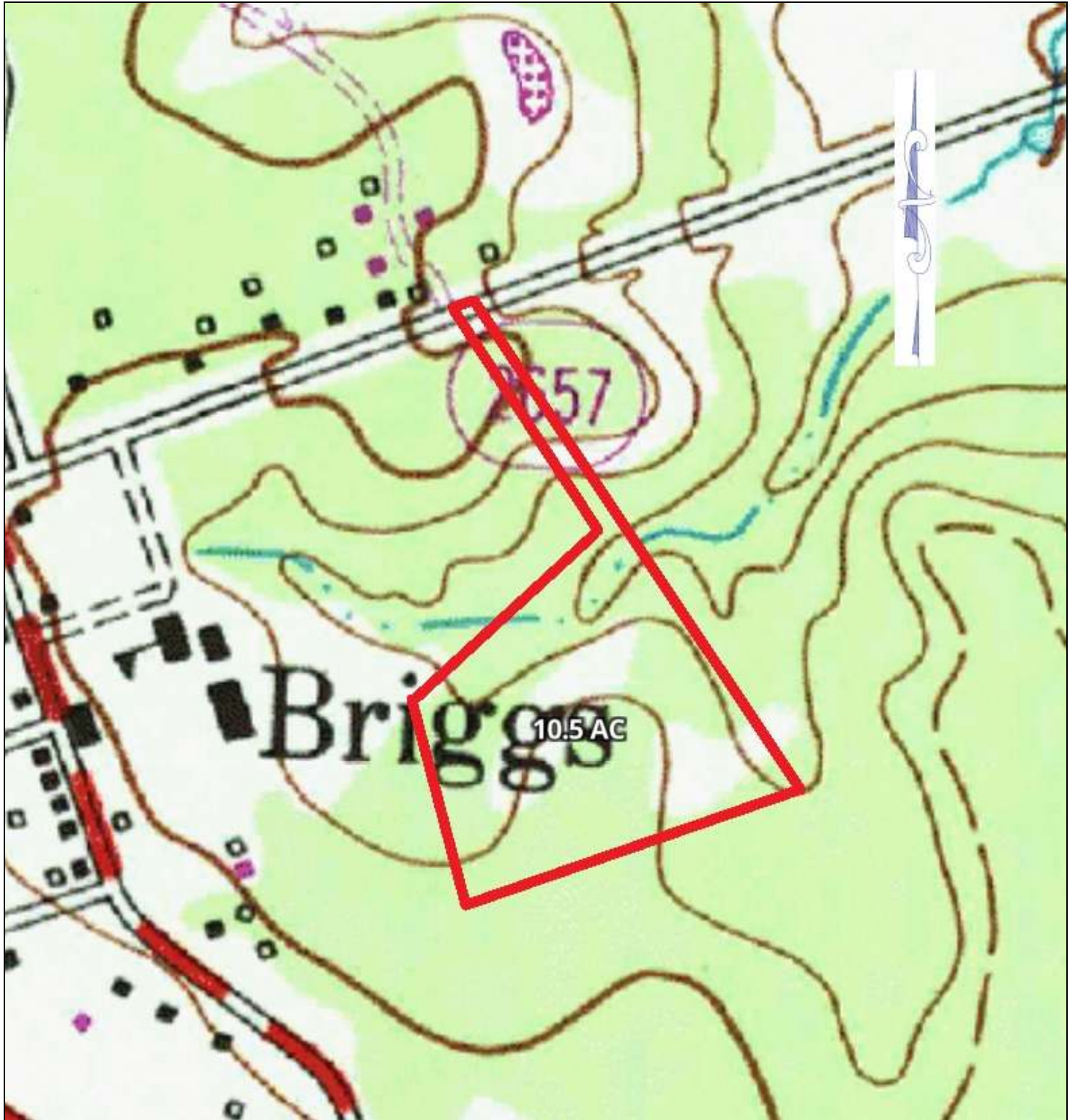
FARM-TO-MARKET RD 2657

FARM-TO-MARKET RD 2657

FARM-TO-MARKET RD 2657

FARM-TO-MARKET RD 2657

10.5 AC



Briggs

10.5 AC

2557



## Property Summary Sheet

**LOCATION:** FM 2657, Briggs

**SIZE:** 10.35 acres

**FENCING:** Partial

**SURFACE WATER:** Seasonal Creek

**SCHOOL DISTRICT:** Burnet

**TAX RATE:** 1.54, Agricultural exemption

**RESTRICTIONS:** None

All sizes, areas, volumes, lengths and distances contained herein are only approximations and are not intended, nor should they be accepted as exact measurements. All information furnished is from sources deemed reliable, but no warranty or representation, expressed or implied, is made to the accuracy thereof, and is submitted to prior sale, withdrawal or other changes in the price or terms without notice.



email: [ranches@jimberryranchsales.com](mailto:ranches@jimberryranchsales.com)