

256 Acres
Burnet County



This 256 acre ranch offers the rare combination of seclusion and convenience. Located on a quiet county road, the property is less than 4 miles to Hwy. 29 and just minutes to Bertram or Liberty Hill.

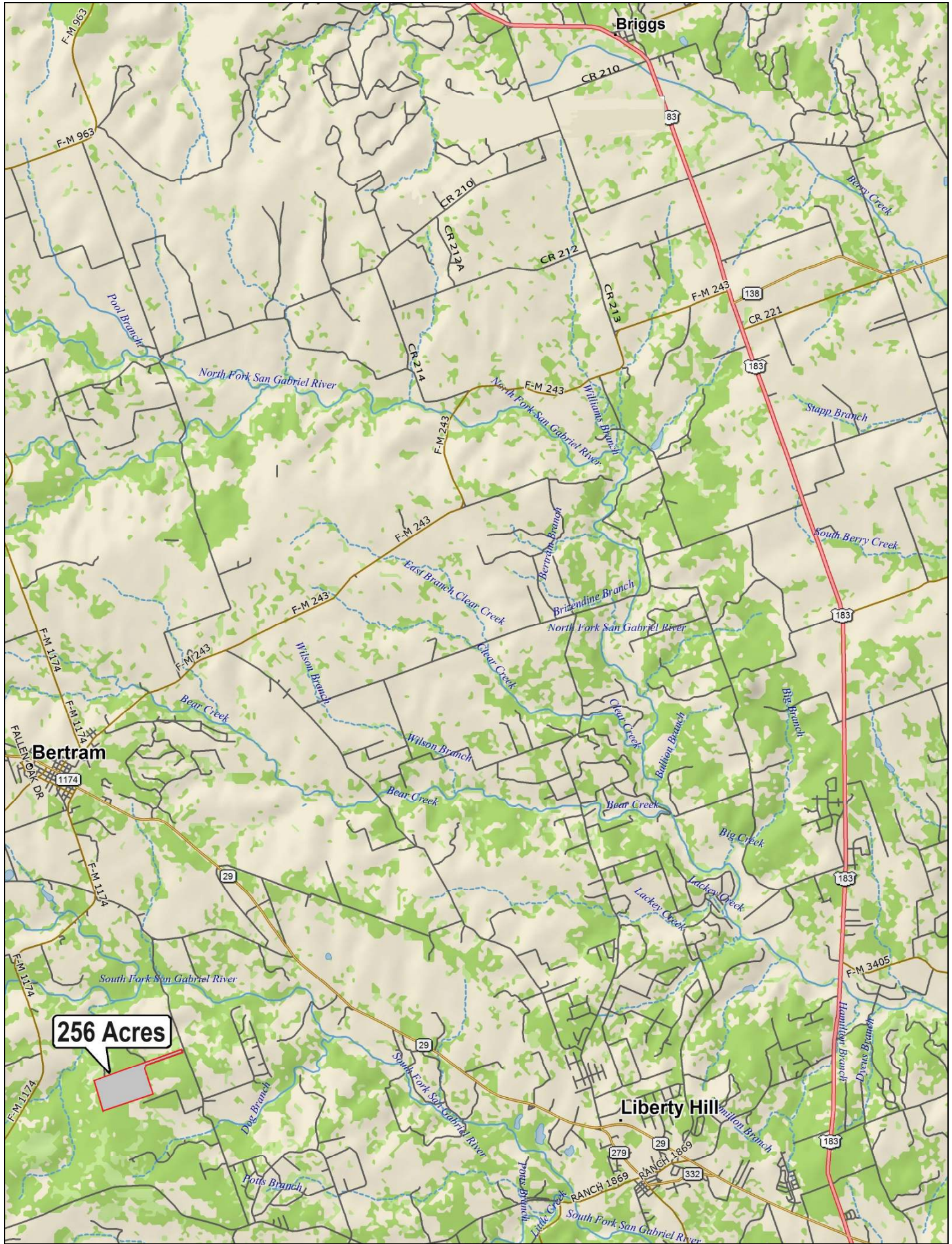
The land is beautiful with mature hardwood trees covering the gently rolling landscape. Some nice grazing pastures compliment the mostly wooded terrain and a picturesque pond provides surface water for the abundant game. This is a high-quality ranch neighbored by large ranches and acreage tracts, yet within a few miles of new neighborhoods and rapidly expanding growth.

\$4,486,125



This information is deemed reliable but is not guaranteed. cc.





Briggs

Bertram

256 Acres

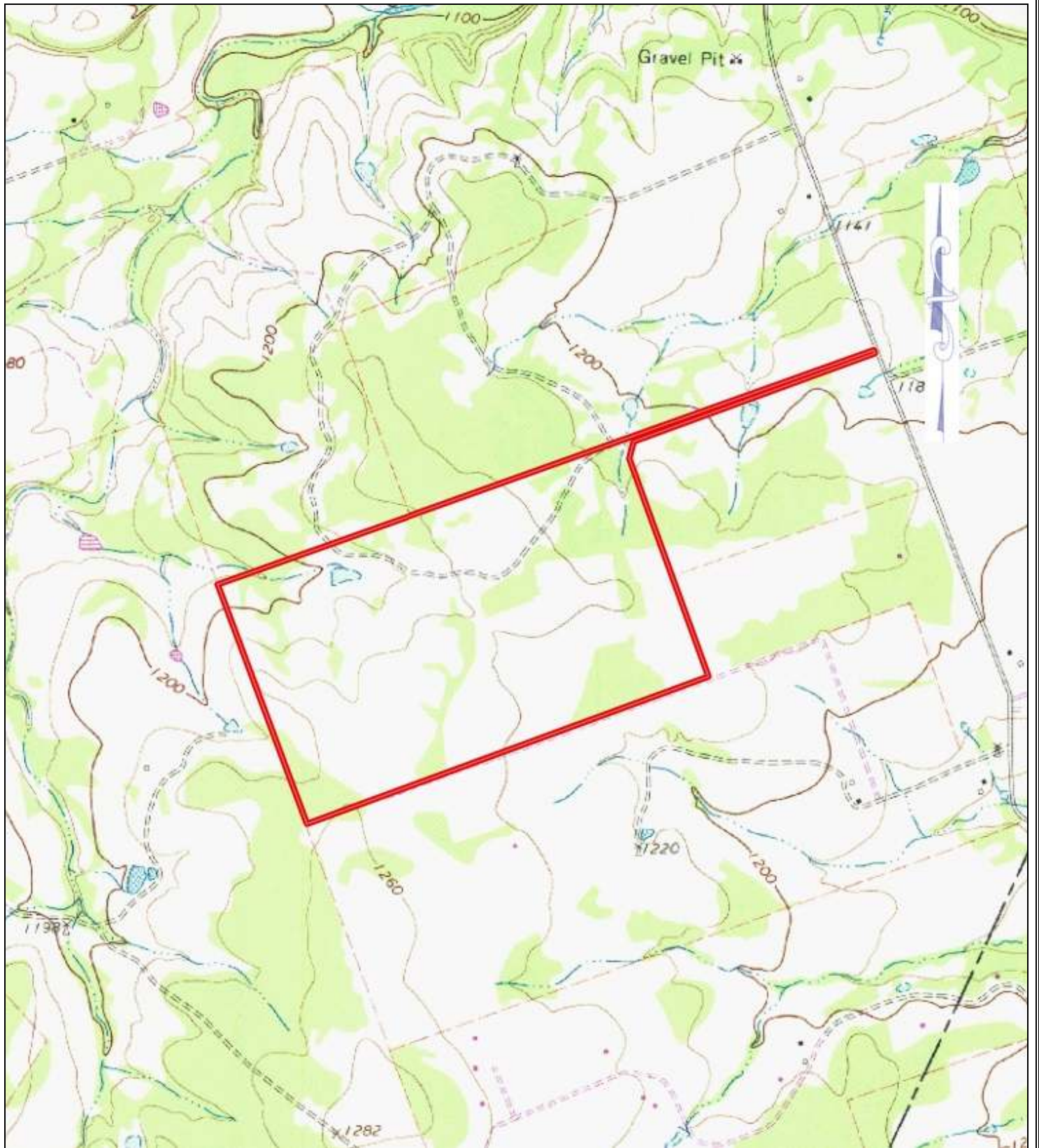
Liberty Hill

RANCH 1869

RANCH 1869

RANCH 1869







Property Summary Sheet

Size: 256+/- acres

Location: CR 323, 3.7 miles from Hwy. 29, 4 miles to Bertram, 7 miles to Liberty Hill, 42 miles (51 minutes) to downtown Austin

Utilities: Electric on site

Well: 530' deep, 15 – 20 gpm

Fencing: Perimeter fenced

School District: Burnet

Property Tax Rate: 1.33 (ag valuation)

Restrictions: Yes

All sizes, areas, volumes, lengths and distances contained herein are only approximations and are not intended, nor should they be accepted as exact measurements. All information furnished is from sources deemed reliable, but no warranty or representation, expressed or implied, is made to the accuracy thereof, and is submitted to prior sale, withdrawal or other changes in the price or terms without notice.



email: ranches@jimberryranchsales.com