

273 Acres
4313 South Hwy 281



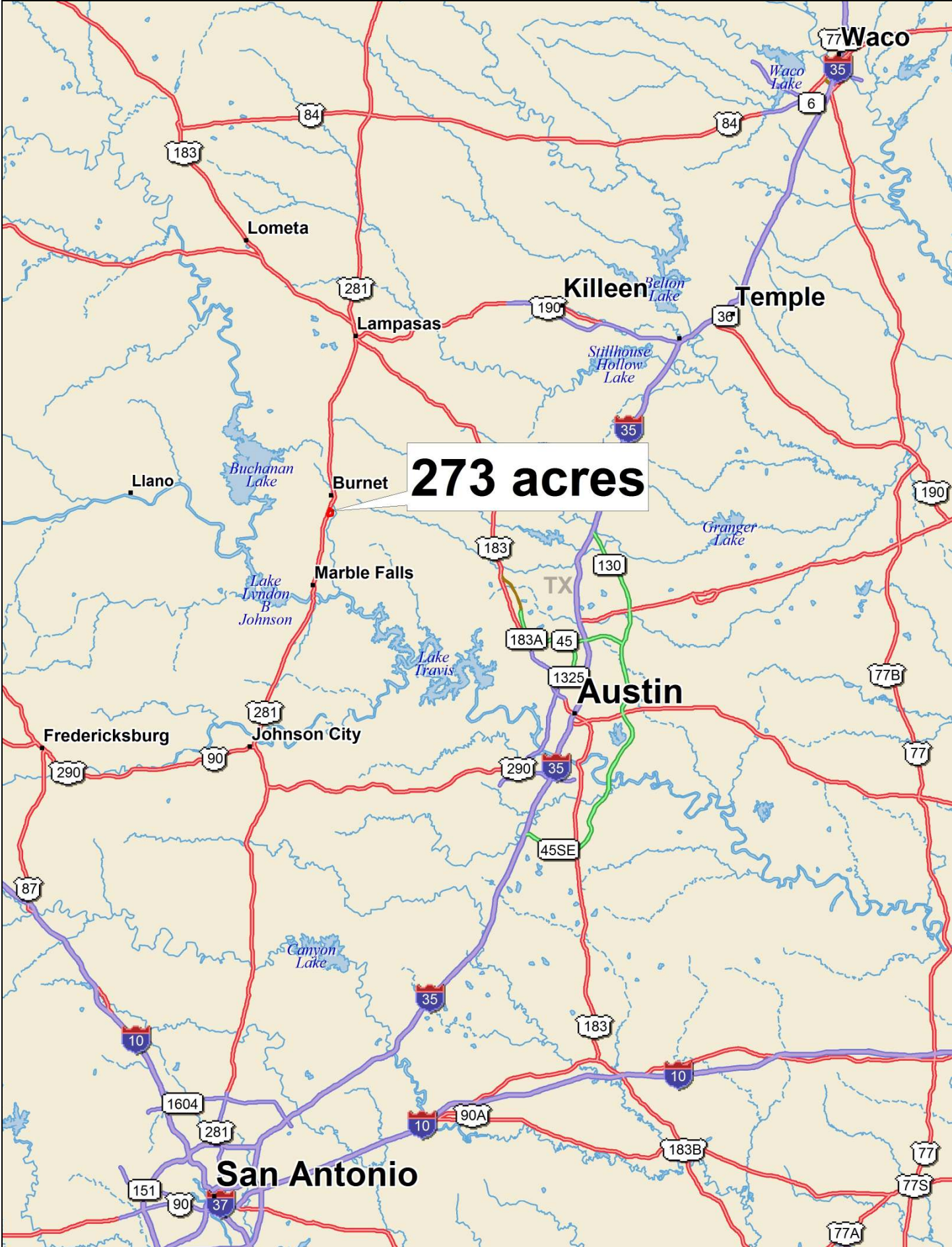
- 4,000 +/- feet of highway frontage
- Railroad access
- No restrictions / Zoning along highway
- \$1,720 Property Taxes

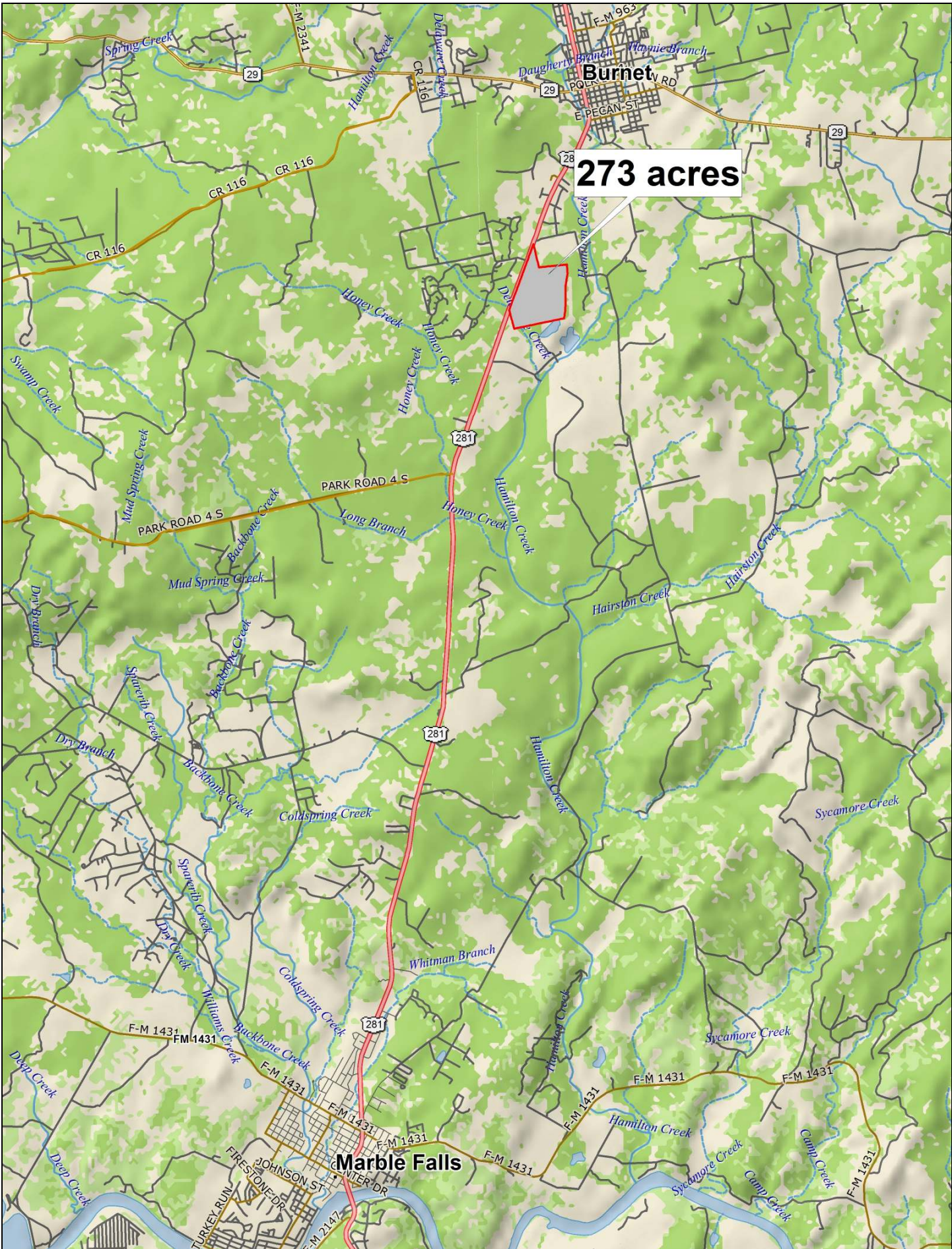
Call for Price



This information is deemed reliable but is not guaranteed. cc.

273 acres

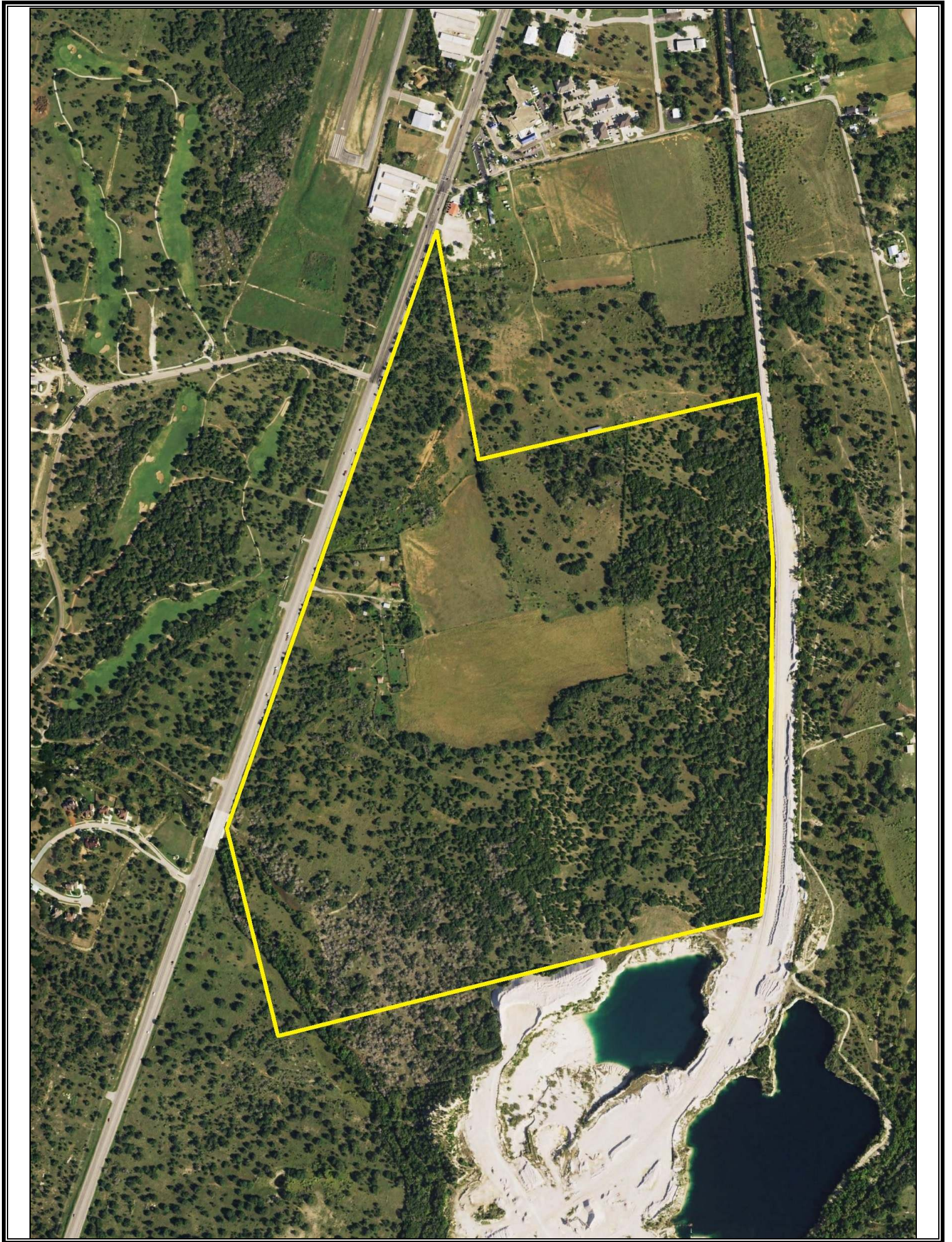


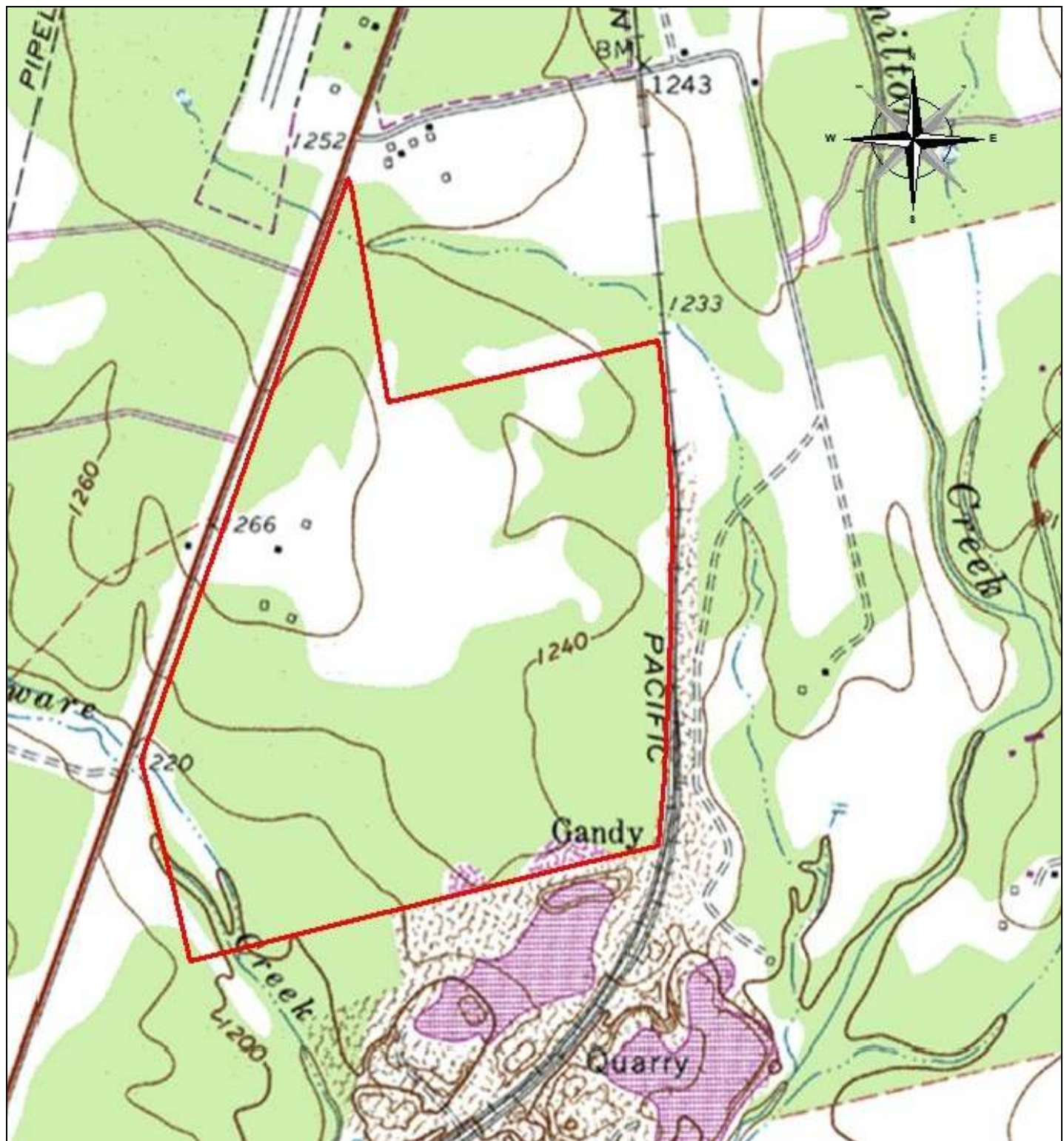


273 acres

Burnet

Marble Falls







Property Summary Sheet

Size: 273 acres

Location: 4313 S. Hwy 281

Improvements: 1905 SF house, corrals and barn

Utilities: PEC electric, Verizon phone, septic system at house, water well

Land

Road Frontage: Approx. 4000 feet

Surface Water: Delaware Creek

Trees: Live Oaks, Elms, etc

School District: Burnet

Annual Property Taxes: \$1,720 with ag exemption

Restrictions: None

All sizes, areas, volumes, lengths and distances contained herein are only approximations and are not intended, nor should they be accepted as exact measurements. All information furnished is from sources deemed reliable, but no warranty or representation, expressed or implied, is made to the accuracy thereof, and is submitted to prior sale, withdrawal or other changes in the price or terms without notice.



email: ranches@jimberryranchsales.com