

12.5 Acres



12 ½ acre hilltop homesite overlooking Lake Buchanan and the surrounding hill country. Located on the east side of the lake in the Silver Creek area with the Burnet County Park boat ramp nearby. The elevation tops out at 1345 feet and falls 200 feet at its lowest point. Scenic canyon and Live Oak trees.

\$445,000

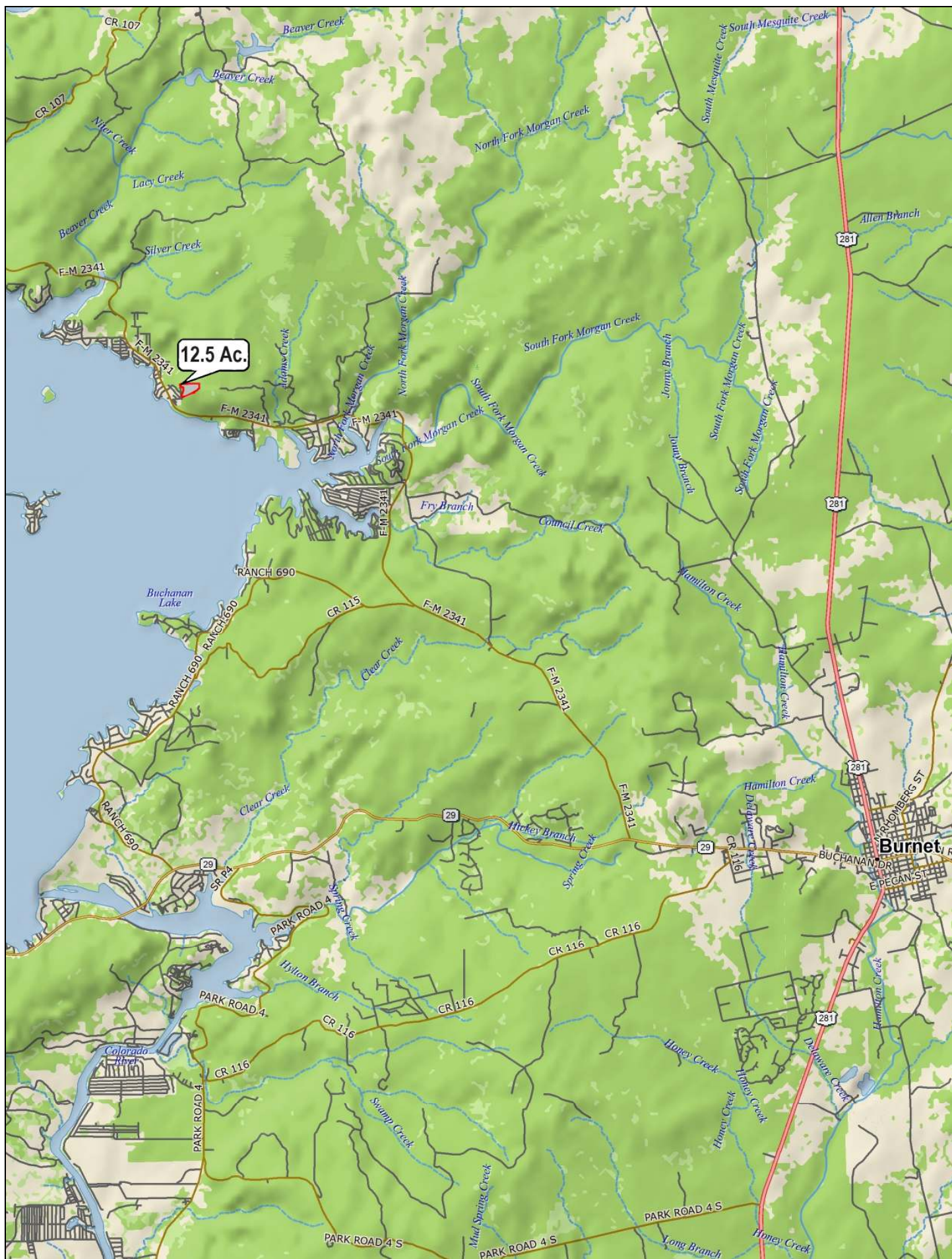


This information is deemed reliable but is not guaranteed. L.N.

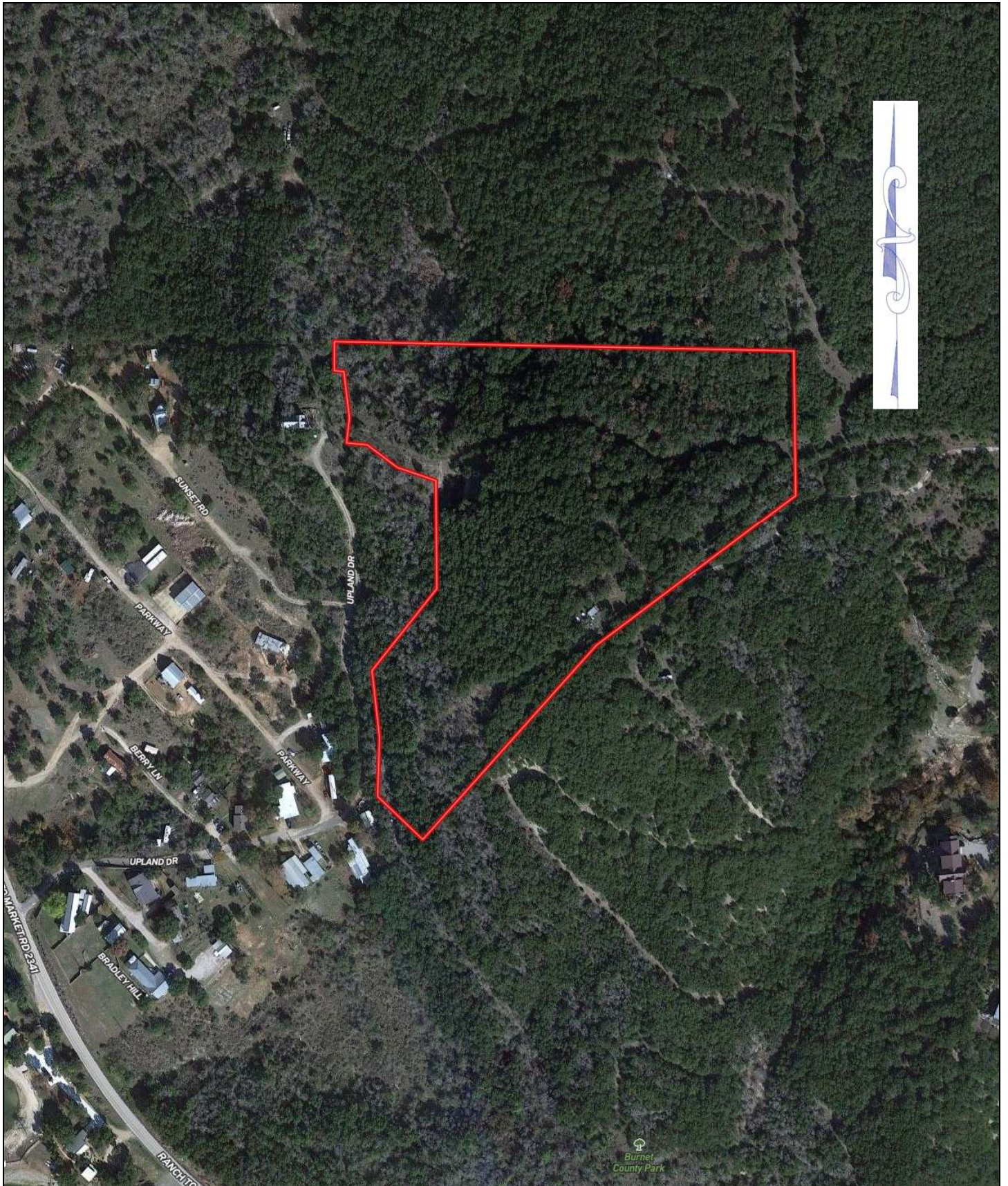




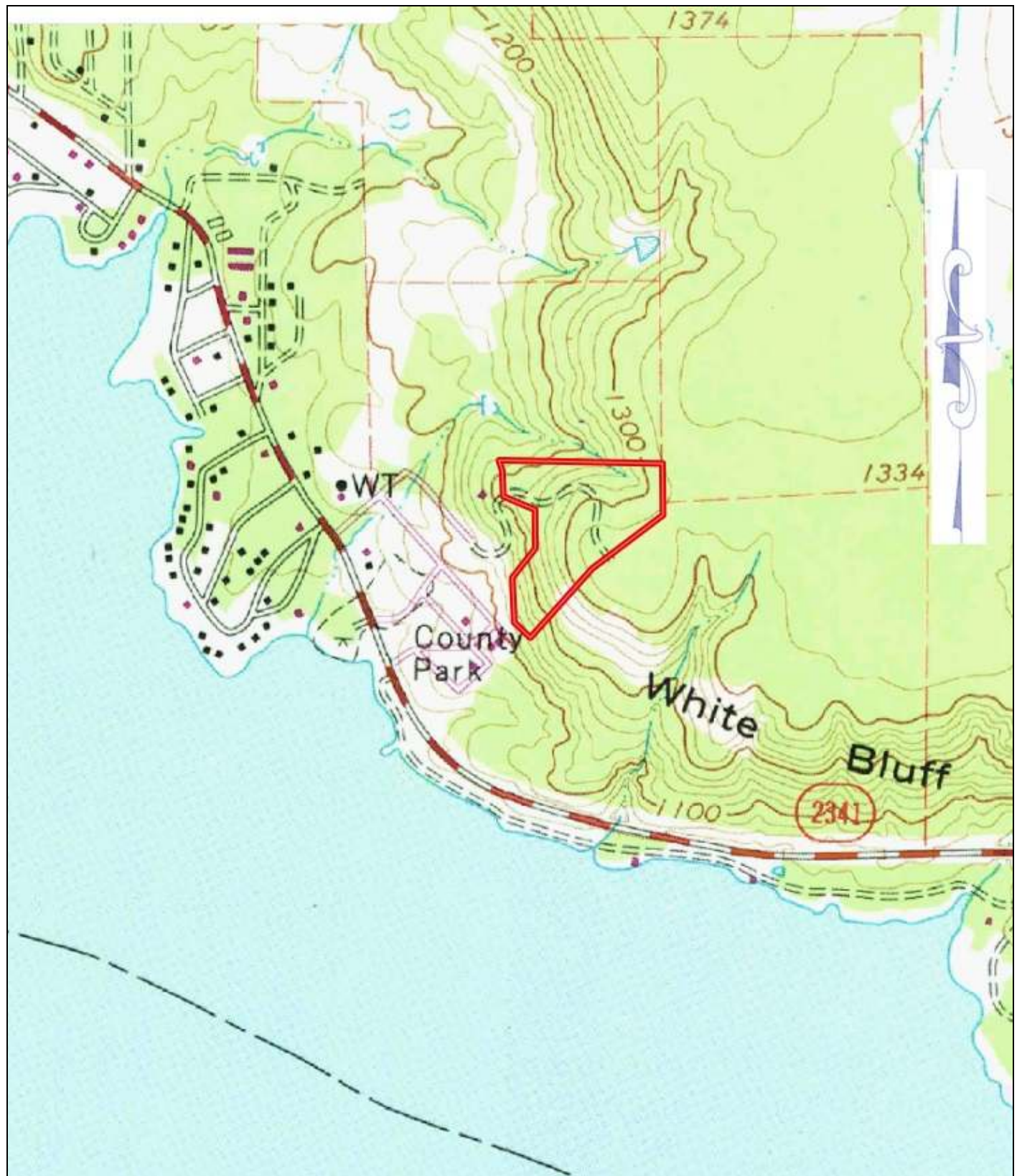




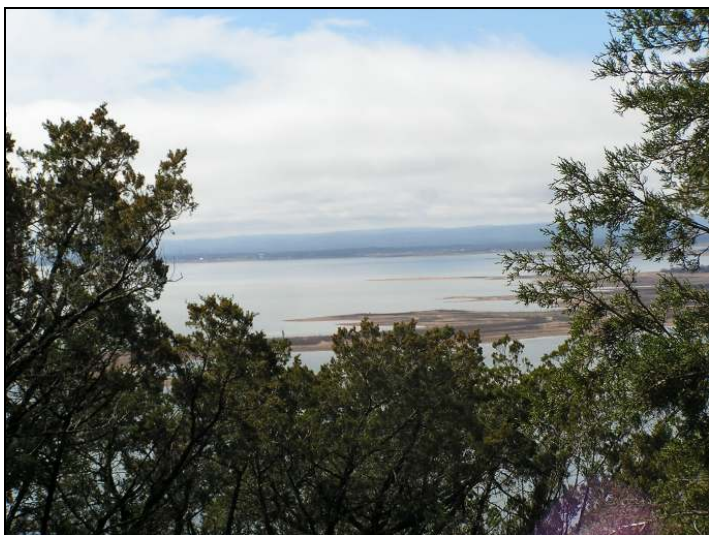














**Jim Berry Hill Country Ranch Sales**  
**Property Summary Sheet**

**LOCATION:** Upland Drive

**SIZE:** 12.5 Acres

**IMPROVEMENTS:** None

**UTILITIES:** Electricity

**SCHOOL DISTRICT:** Burnet

**2023 PROPERTY TAXES:** \$2,630

**RESTRICTIONS:** None

All sizes, areas, volumes, lengths and distances contained herein are only approximations and are not intended, nor should they be accepted as exact measurements. All information furnished is from sources deemed reliable, but no warranty or representation, expressed or implied, is made to the accuracy thereof, and is submitted to prior sale, withdrawal or other changes in the price or terms without notice.



email: [ranches@jimberryranchsales.com](mailto:ranches@jimberryranchsales.com)