

49 Acres
CR 200 – Joppa



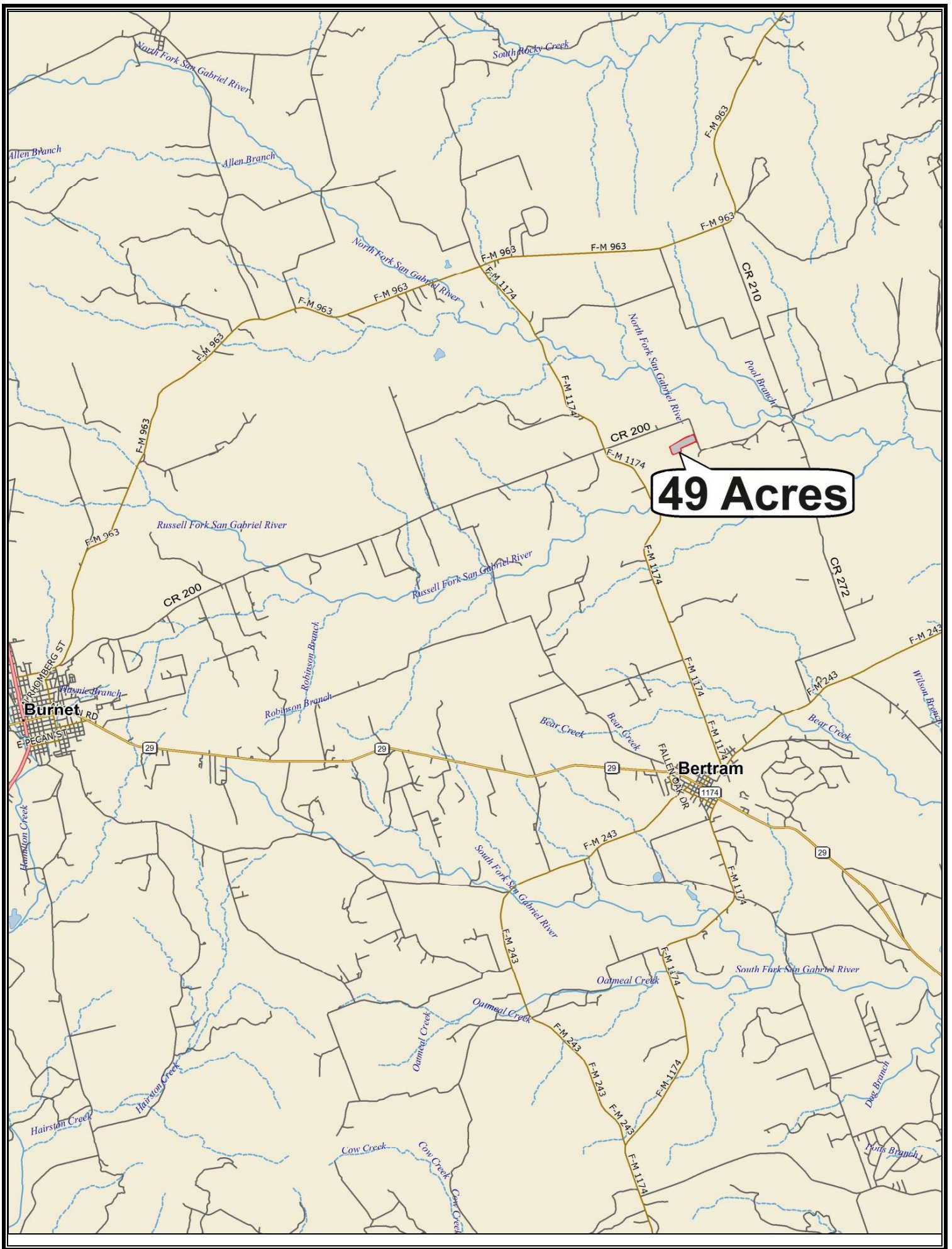
49 acres located north of Bertram on Burnet County Road 200. This ranch has excellent cover, including a variety of oak and assorted hardwoods. The rolling land features a pond that still had water in late August, supplying water to cattle and the abundant game. Secluded, yet convenient, the property is 10 minutes to Bertram, 30 minutes to Leander and one hour to downtown Austin.

\$856,000

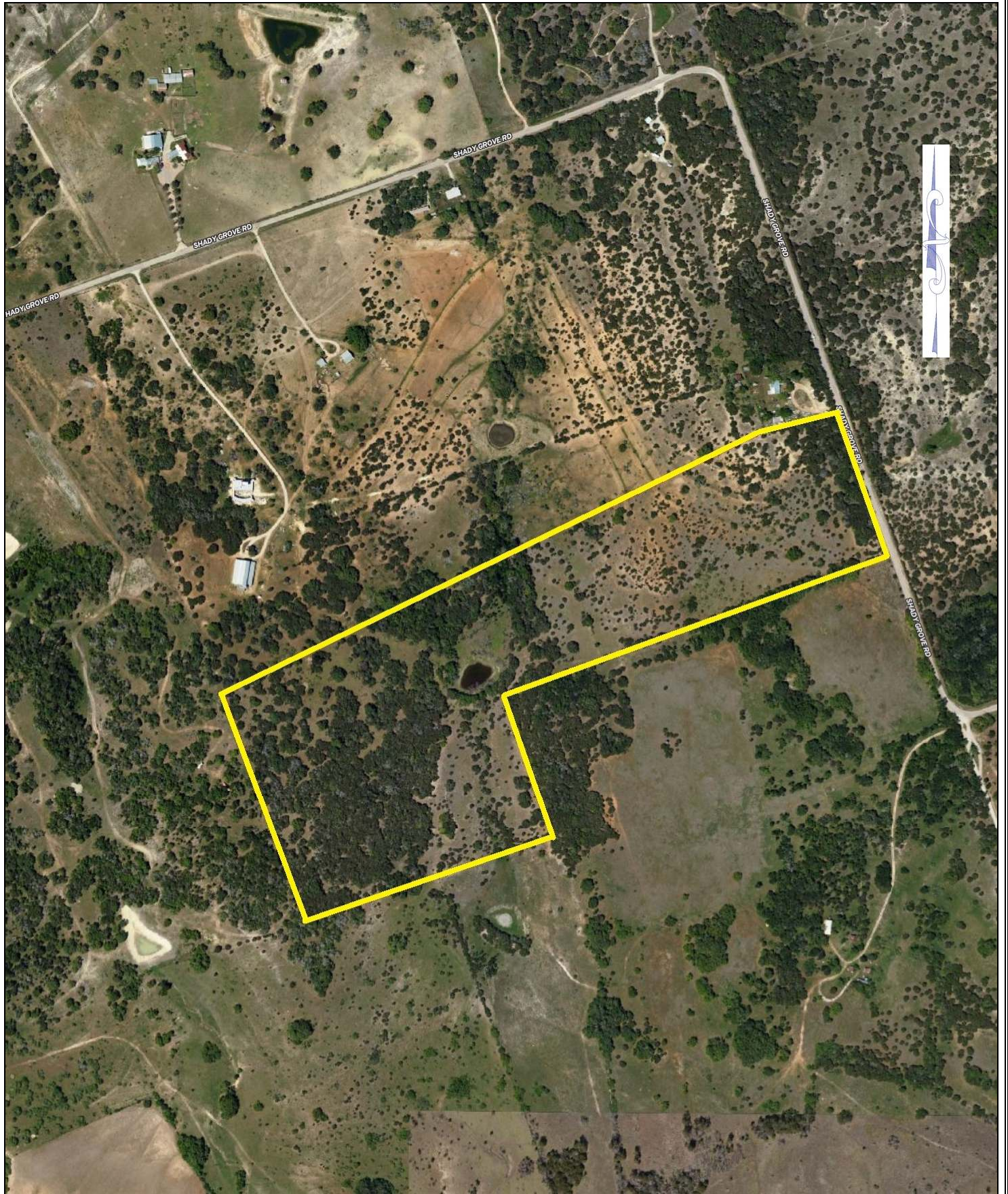


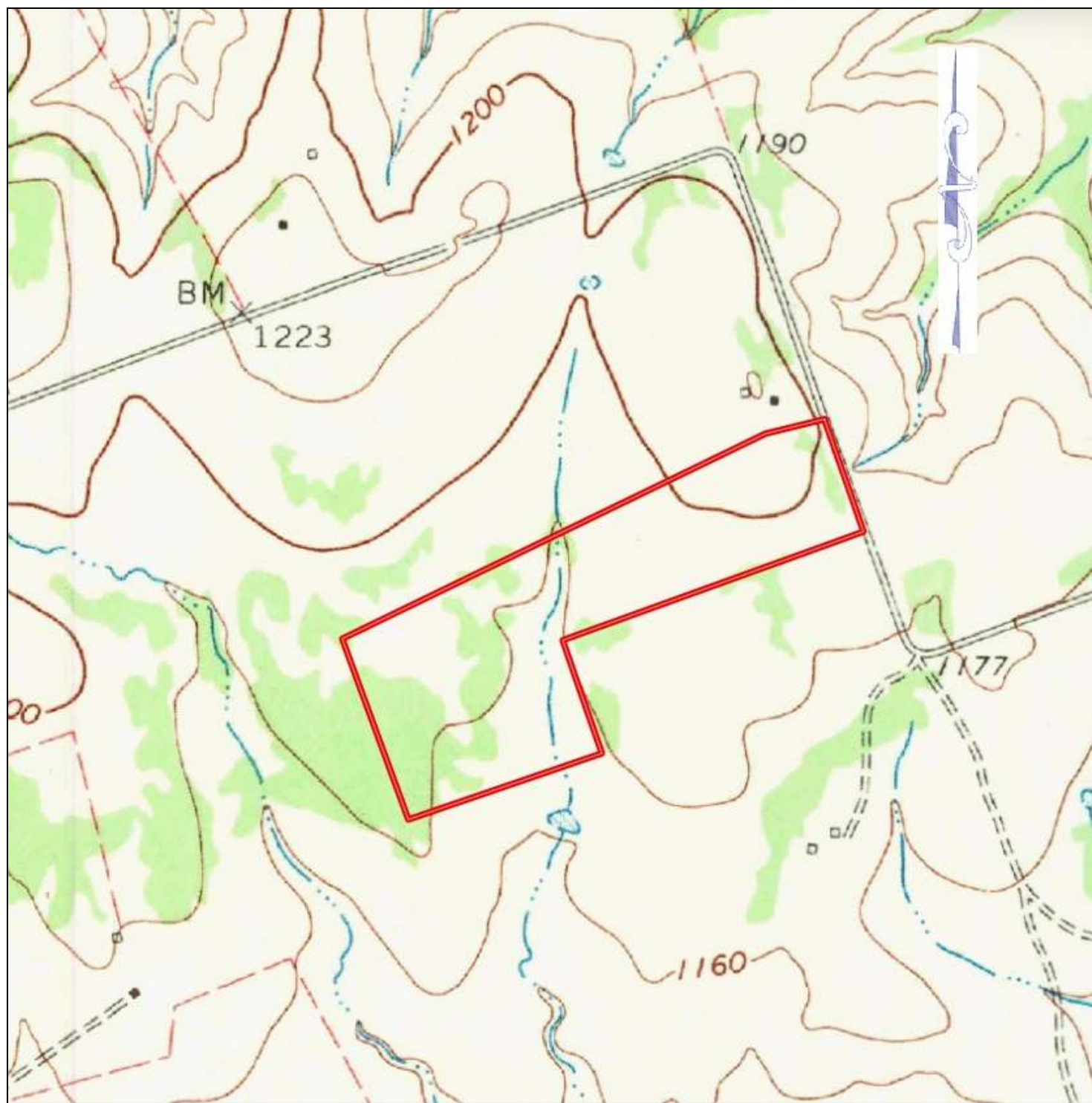
This information is deemed reliable but is not guaranteed. cc.





49 Acres







Property Summary Sheet

LOCATION: Burnet County Road 200

SIZE: 49 acres

FENCING: Partial

UTILITIES: Electric

SURFACE WATER: Pond

SCHOOL DISTRICT: Burnet

TAX RATE: 1.33, Agricultural exemption

RESTRICTIONS: None

All sizes, areas, volumes, lengths and distances contained herein are only approximations and are not intended, nor should they be accepted as exact measurements. All information furnished is from sources deemed reliable, but no warranty or representation, expressed or implied, is made to the accuracy thereof, and is submitted to prior sale, withdrawal or other changes in the price or terms without notice.



email: ranches@jimberryranchsales.com