

The Peninsula on Lake Buchanan

Lot 69 – 0.90 Acres

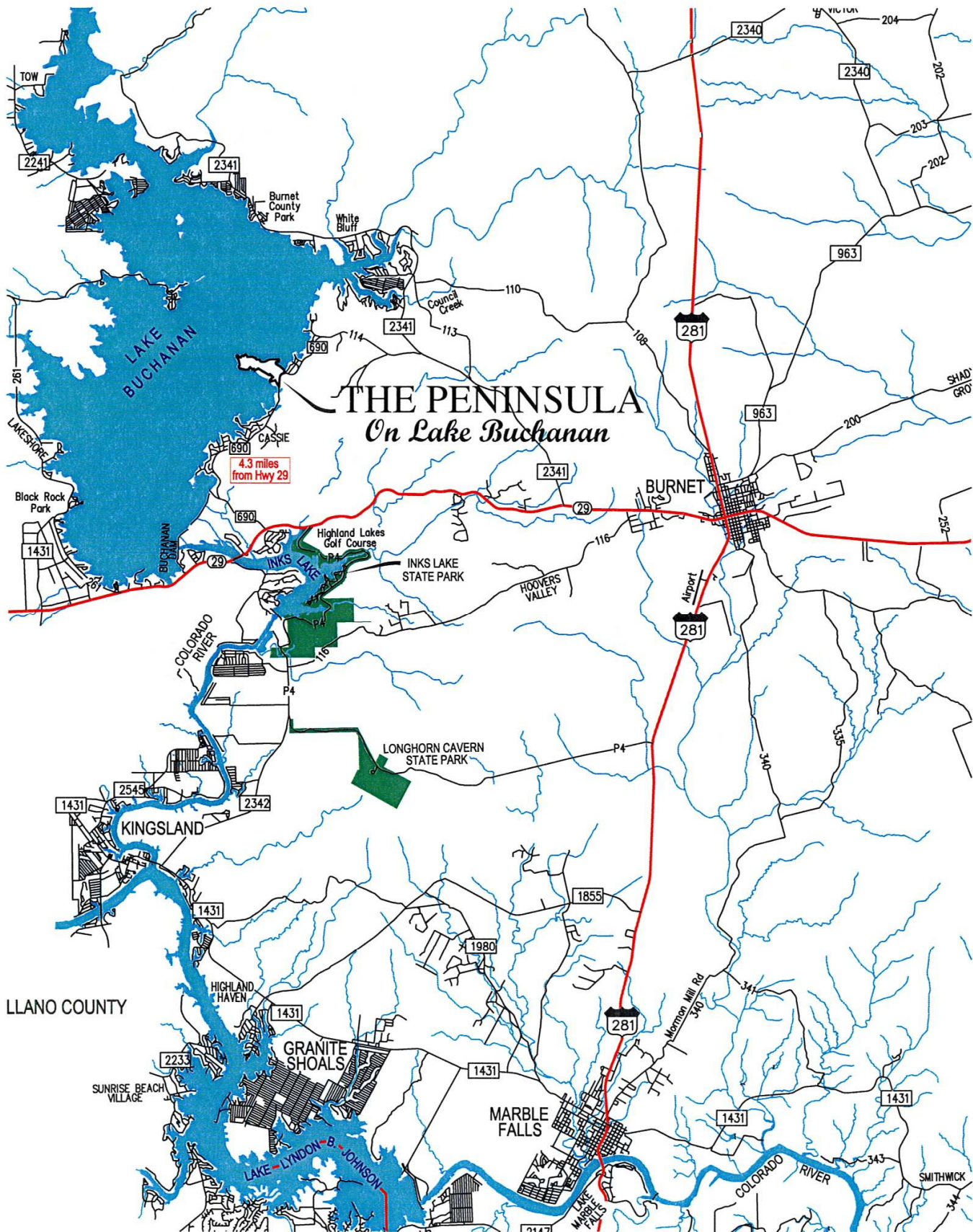


The Peninsula on Lake Buchanan is a one-of-a-kind lake development. It has the only significant peninsula that extends out into the lake, so even with fluctuating lake levels this development always has easy lake access. The lake views are always right in front of you. Here, you have a private marina (only for PoLB property owners) at beckon call for quick and easy access to your water crafts. The PoLB development has a private water plant providing you with clean household water and all utilities are underground. The Peninsula on Lake Buchanan has beautiful landscaping around the entry gate, mail box pergola, lighthouse and the private water plant. Lot 69 is nine tenths of an acre in size with lots of room for your custom home. This lot being on the ridge of the development, has panoramic lake views in both North & South directions. Your personal designated boat slip no. 86 is waiting for your water crafts. Come and be amazed how you will feel right at home in the hill country.

\$195,000



This information is deemed reliable but is not guaranteed. L.N.





The **PENINSULA** ON LAKE BUCHANAN





Property Summary Sheet

COUNTY: Burnet

LOCATION: The Peninsula on Lake Buchanan Lot 69

SIZE: 0.90 acres

SCHOOL DISTRICT: Burnet

TAXES: \$1,531

HOME OWNER'S ASSOCIATION: \$2,115/yr

RESTRICTIONS: Yes

All sizes, areas, volumes, lengths and distances contained herein are only approximations and are not intended, nor should they be accepted as exact measurements. All information furnished is from sources deemed reliable, but no warranty or representation, expressed or implied, is made to the accuracy thereof, and is submitted to prior sale, withdrawal or other changes in the price or terms without notice.



Email to: ranches@jimberryranchsales.com